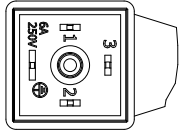
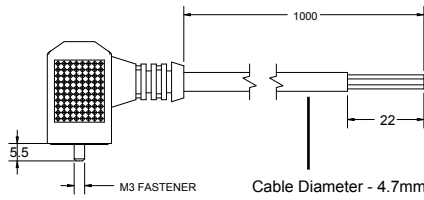
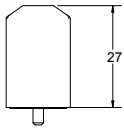
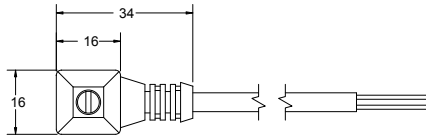
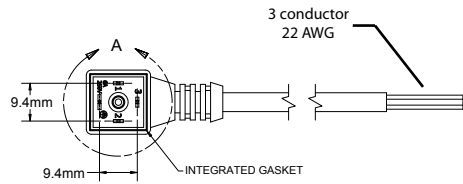


176 degrees F max temp



DETAIL A
SCALE 3 : 1



- Pin 1 - Red
- Pin 2 - Black
- Pin 3 - White
- Pin 4 - Ground

Tolerance Notes 2 Decimals +/- .01 3 Decimals +/- .005 Angular +/- .30- Deburr and Break Edges Surf. 125um Max All Dias .010 T.I.R.	FILE #	Transducers Direct 264 Center Street Miami, Ohio 45147				
	DESIGNER N. LAM				TITLE TD4P9 Series Cable Assembly	
	DATE 04/03/2006	APP. BY	SIZE C	SCALE 1.5:1	DWG NO P05J432-89068-1-001	REV 00
	APP. DATE	Matl SEE SPECS	SHEET 1	OF 1		