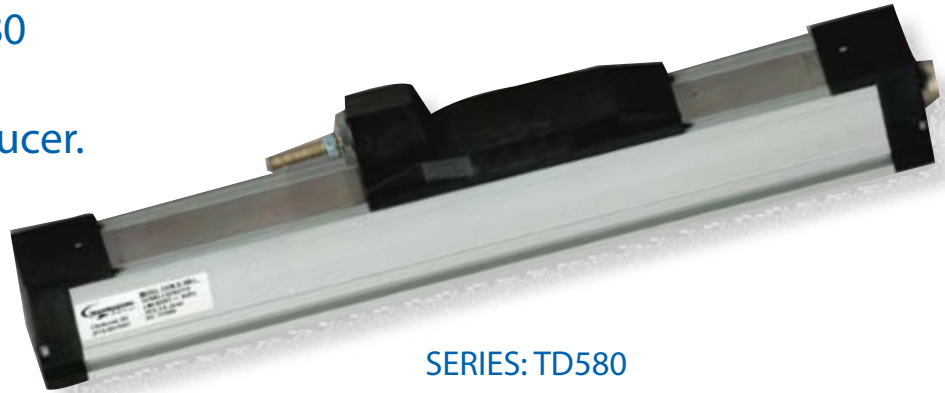


Introducing the TD580 Series Rodless Linear Displacement Transducer.

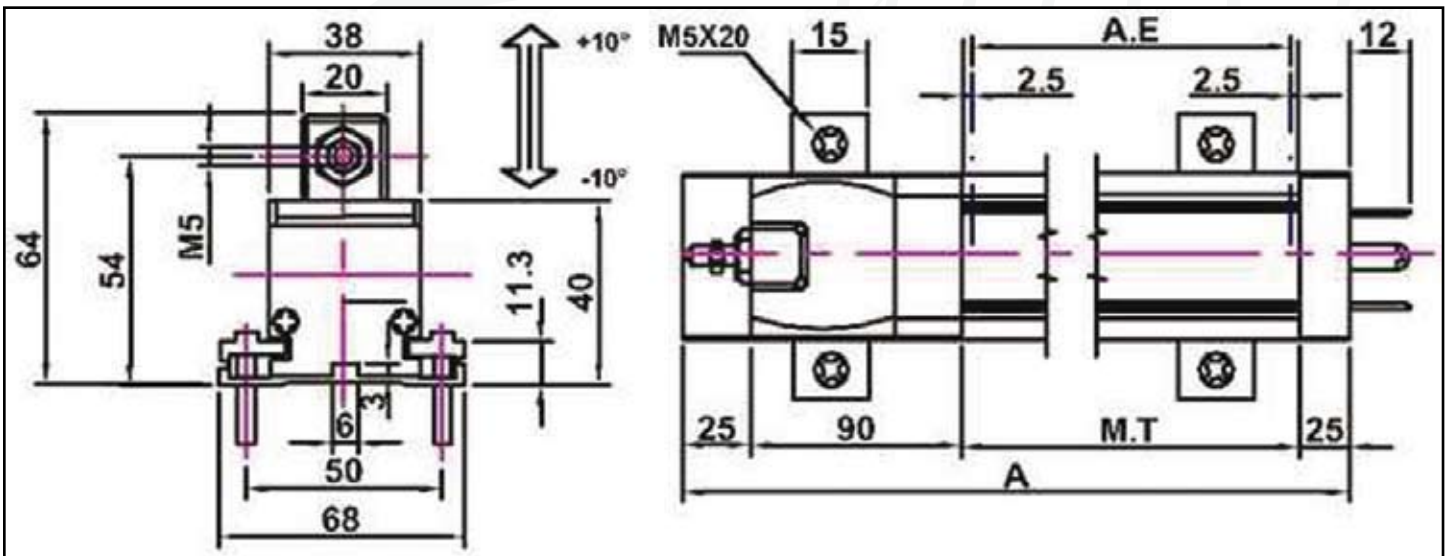


SERIES: TD580

FEATURES

- 75 to 1000 mm. stroke
- Mechanical linkage using joint with take up of play, M5 thread
- Independent linearity $\pm 0.3\%$
- Repeatability 0.01 mm.
- Infinite resolution
- Displacement speed: 10 meter/sec
- Working temperature: -55 to $+125^{\circ}\text{C}$
- Electrical connections:
 - 4-pole connector DIN43650 Large (18mm)
 - 4-pole connector DIN43650 Mini (9.4mm)
 - 5-pole connector (DIN43322)
- Life duration: $> 25 \times 10^6$ meters or $> 100 \times 10^6$ operations, whichever is the smaller
- Grade of protection IP40

DIMENSIONS



Dimensions In Millimeters And Are Reference Only.

SPECIFICATIONS

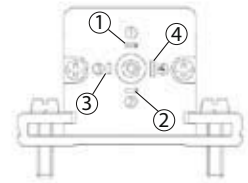
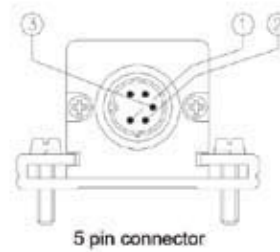
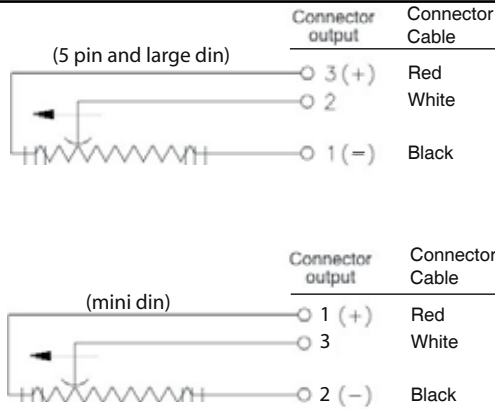
Useful electrical stroke	75/100/130/150/175/200/225/250/275/300/350/375/400 425/450/500/550/600/650/700/750/800/900/1000
Independent linearity	0.3%
Displacement speed	10 meters / sec
Displacement force	1.2 N
Vibrations	5 to 2000Hz, Amax =0.75 mm amax. = 20 g
Shock	50 g, 11ms.
Acceleration operative	2 200 m/s max (20g)
Tolerance on resistance	± 20%
Recommended cursor current	< 0.1 mA
Maximum cursor current	10mA
Maximum applicable voltage	60V
Electrical isolation	>100 M at 500V=, 1bar, 2s
Dielectric strength	< 100mA at 500V~, 50Hz, 2s, 1bar
Dissipation at 40°C	3W (0W at 120°C)
Temp. Coeff. of resistance	-200 ± 200ppm/°C
Actual Temp. Coefficient of the output voltage	< 1.5ppm/°C
Working temperature	-55 to +125°C
Storage temperature	-50 to +120°C
Case material Anodized 40	aluminum Nylon 66 GF
Cursor block material	Nylon 66 GF 40 Latilub 73/13
Mounting	Brackets with variable longitudinal axis

TRANSDUCERS

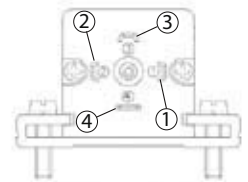
MECHANICAL / ELECTRICAL DATA

TD580 SERIES		75	100	130	150	175	200	225	250	275	300	350	375	400	425	450	500	550	600	650	700	750	800	900	1000		
Total Electrical Travel(T.E)	mm	76	102	132	152	177	202	229	254	279	305	355	381	405	430	457	507	557	610	660	710	762	812	914	1014		
Active Electrical Travel(A.E)	mm	75	100	130	150	175	200	225	253	276	302	352	378	403	428	455	505	555	607	657	707	759	809	912	1013		
Resistance+20%	K ohm	5.0	5.0	5.0	5.0	5.0	5.0	5.0	5.0	5.0	5.0	5.0	5.0	5.0	5.0	5.0	5.0	5.0	5.0	10	10	10	10	10	10.0		
Linearity		0.3%												0.3%													
Mechanical Travel(M.T)	mm	79	104	135	155	179	204	231	256	281	307	357	384	404	429	460	506	558	612	662	712	765	815	917	1017		
Resolution		Infinite																									
current	mA	<10																									
Temperature	°C	-55-----+125																									
Dimension A	mm	216	241	271	292	317	343	368	393	418	444	494	521	538	563	597	638	688	738	788	838	888	938	1038	1138		

ELECTRICAL CONNECTIONS



43850 mini din 9.4mm
(standard)



43850 large din 18mm

ACCESSORIES

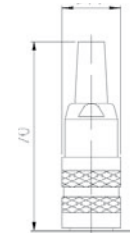
Includes 2 mounting feet w/M4x26 screws
MATING CONNECTORS



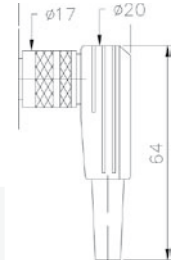
4 pin IP65
TD4P9-00
mini din



4 pin IP65
TD4PL-00
large din



TD5P-CS-00
5 pin straight



TD5P-CR-00
5 pin Right Angle

ORDERING

Series	Connector	Length (inmm)
TD580M	D	150
	D = 4 Pin Mini Din Connector	75 500 100 550
	4 = 4 Pin Large Din Connector	130 600 150 650
	5 = 5 Pin Connector	175 700 200 750 225 800 250 900 275 1000 300 350 375 400 425 450

**= Consult factory for further options.

Transducers Direct® is a registered trademark of Transducers Direct, LLC.)

Specifications may change without notice. The information we supply is believed to be accurate and reliable as of this printing. However, we assume no responsibility for its use. While we provide application assistance personally, through our literature and the Transducers Direct web site, it is up to the customer to determine the suitability of the product in the application.

REV: 07.07