

CirrusSense™  
TDWLB, TDWLB-DL  
& TDWLB-LC  
Android Application  
User Guide

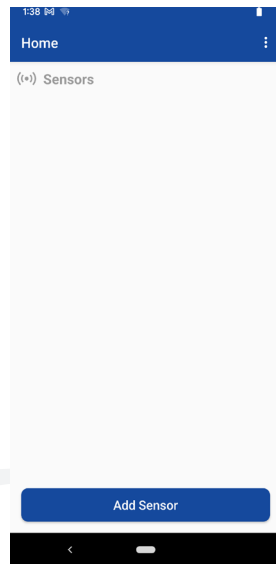
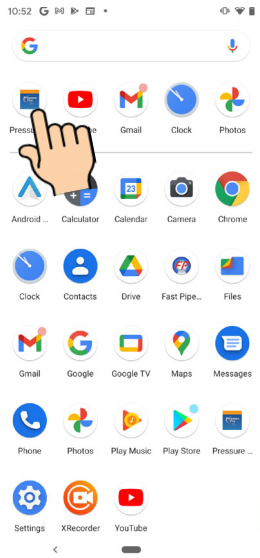


TABLE OF CONTENTS

Getting Started.....	2
Startup.....	2
Connect.....	2
Sensor Settings.....	3
App Settings.....	4
Using the Sensor.....	7
Advanced Settings.....	7
Sensor Information.....	7
Sensor Name Change.....	8
Zero/Tare Function.....	8
Data Logging.....	9
Data Logging Session Information....	10
Starting a Session.....	10
Stopping a Session.....	12
Get Data Log Files.....	13
Deleting a Saved Data Log File.....	14
Emailing the Logged File.....	14
Settings.....	11
Setting up a Watchlist.....	15
Deleting a Watchlist.....	17

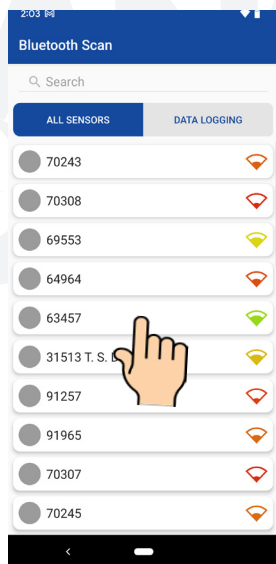
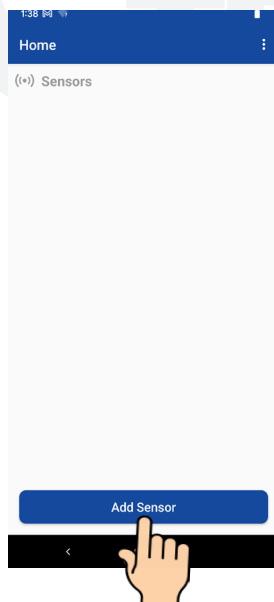
## GETTING STARTED

### Startup

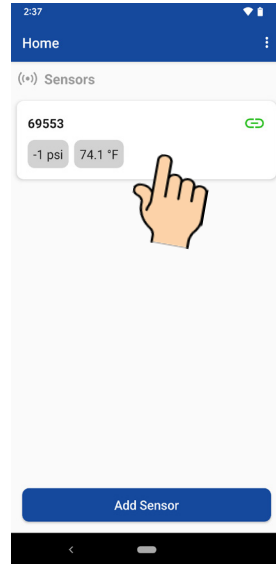
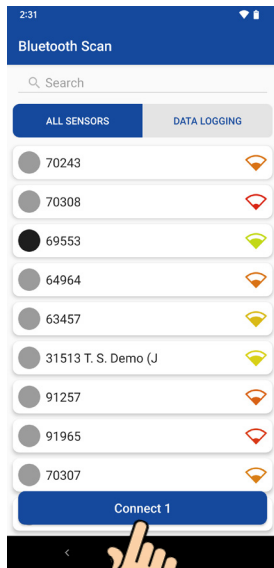


- Download the Pressure Pro app from the Google Play Store.
- Make sure that Bluetooth is turned on.
- Select the Pressure Pro icon to launch the app.
- Home screen displays.

### Connect

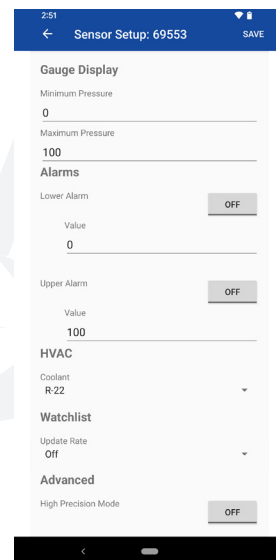
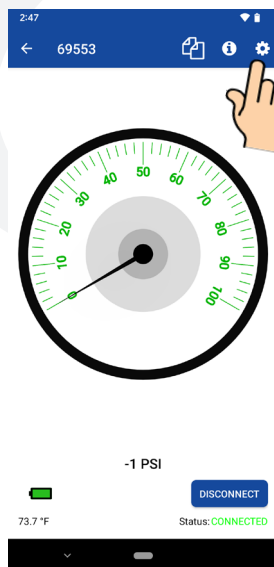


- Click the “Add Sensor” button at the bottom of device.
- All TDWLB sensors within range appear in a list.
- To view both standard and data logging sensors, select the “All Sensors” tab.
- To view data logging sensors only (TDWLB-DL version), select the “Data Logging” tab.
- Select the sensor(s) you want to connect to.
- If you know the serial number or name of the sensor you want to connect to, enter the serial number or name in the “Search” bar. That sensor will be the only one that displays in the list. Select the sensor to connect.



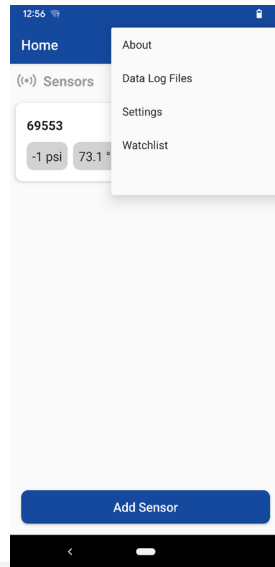
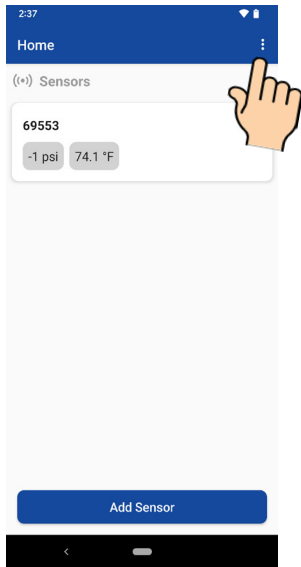
- Click the “Connect” button at the bottom of the screen.
- Connected sensor(s) display on the screen, along with the sensor pressure and temperature.
- To view the large gauge for a single sensor, select the sensor cell.

## Sensor Settings

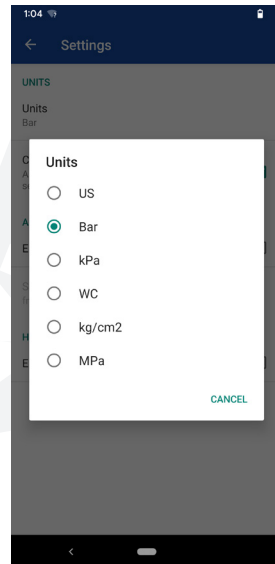
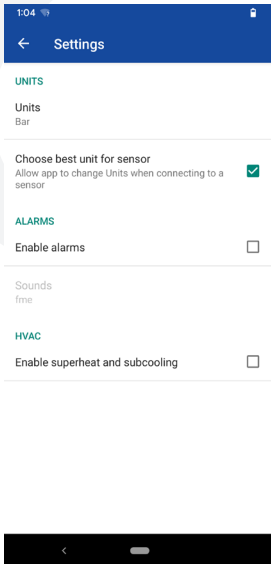


- View sensor settings by selecting the “Gear” icon on top right of app.
- **Gauge Display:**  
**Minimum Pressure:** Typically set to zero. To read vacuum pressure on the gauge, set to the desired negative number (-14.7 typical).  
**Maximum Pressure:** Typically set at the full scale range of the sensor. For better resolution on the gauge, set the maximum pressure to a lower number.
- **Alarms:** To receive audible and visual alarms in the app, set the upper and lower alarm pressure limits. Click the “OFF” button to turn on the alarms.
- **HVAC:** When working with HVAC pressure settings, select the refrigerant you are using.
- **Watchlist: Update Rate** Unless you are using our router or watchlist mode, leave setting to Off.
- **Advanced: High Precision Mode:** Allows you to add decimal places to the digital readout. To enable, click the “OFF” button.
- Select “Save” in the upper right-hand corner to save any changes.

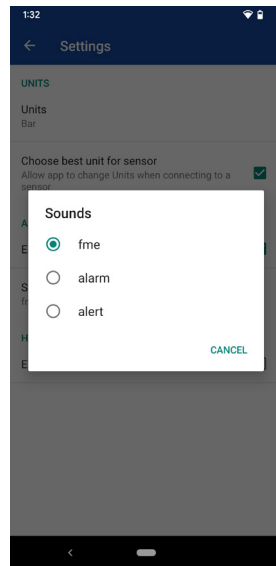
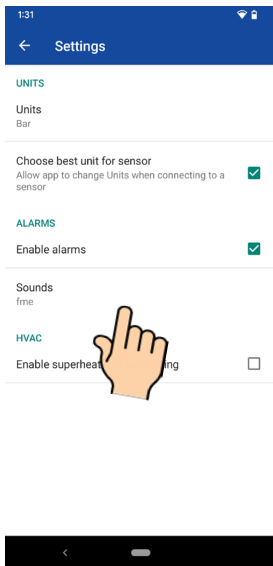
## App Settings



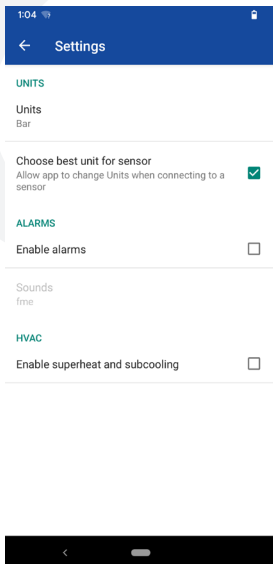
- To view app settings, select the “Vertical Ellipse” icon (top right) from the Home screen.
- Select “Settings” from the dropdown menu.



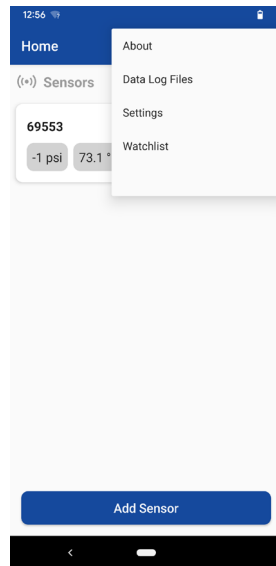
- **Units:** Displays the units of measure for pressure, which will automatically select either Celcius or Fahrenheit for temperature. To change the Units, select the Units cell. Select the Units from the menu.
- **Choose best unit:** Determines if the app will automatically change the “units” setting to be most appropriate for the connected sensor. For example, if the setting is enabled and you connect to a sensor that measures in inches of water, the units will change to water column.
- The US (United States) setting is psi. The WC (Water Column) setting is inches of water column.



- **Enable Alarms:** Select to enable alarms that were created on the sensor settings screen. (To access the sensor settings screen, click the “Gear” icon while on the large gauge screen).
- **Sounds:** With “Enable Alarms” selected, select “Sounds” and choose from 3 different alarm sounds.
- Select your preferred sound.



- **HVAC:** When working with HVAC, you can enable superheat and subcooling.

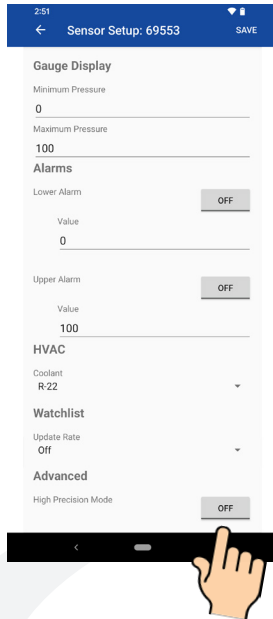


- To view additional data, select the “Vertical Ellipsis” icon (top right) from the Home screen.
- **About:** Select to view app version and Transducers Direct’s contact information.
- **Data Log Files:** Select to view a list of saved log files stored on one or more sensors. Files can be viewed without being connected to the sensor.
- **Watchlist:** This is where you can set up a watchlist for viewing multiple sensors simultaneously.

**TRANSDUCERS**  
*direct*®

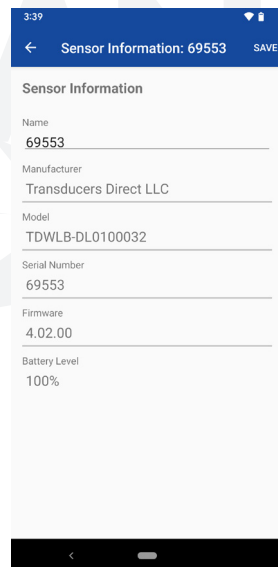
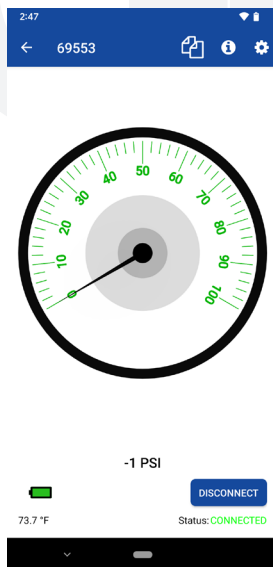
## USING THE SENSOR

### Advanced Settings



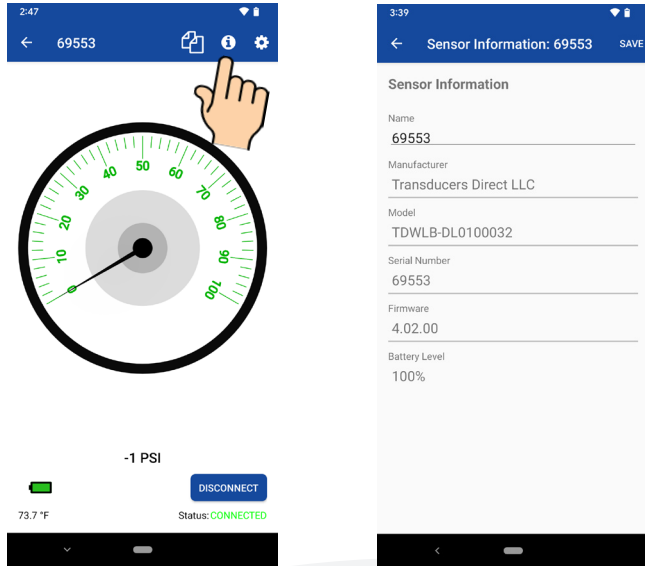
- **High Precision Mode:** To allow decimal places to be added to the digital readout, Click the “OFF” button to turn on High Precision Mode.

### Sensor Information



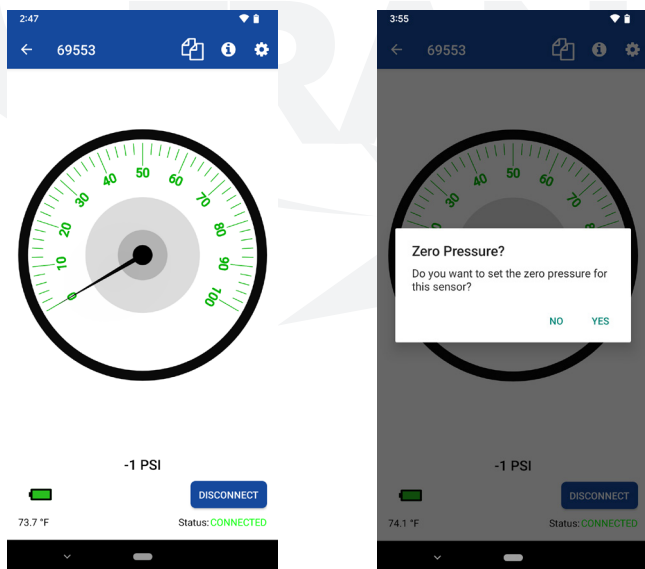
- Select the “Sensor Information” icon.
- Name: The default sensor name is the sensor serial number. You can rename the sensor by typing in a new name.
- **Sensor Information:** Displays sensor specific information.

### Sensor Name Change



- Select the “Information” icon.
- Select the sensor name bar.
- Backspace to delete and type to rename the sensor to your specifications.

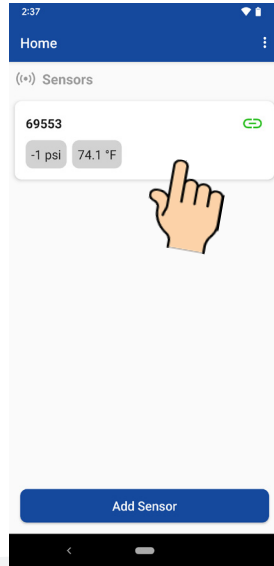
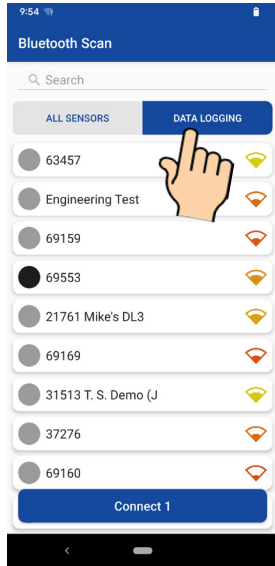
### Zero/Tare Function



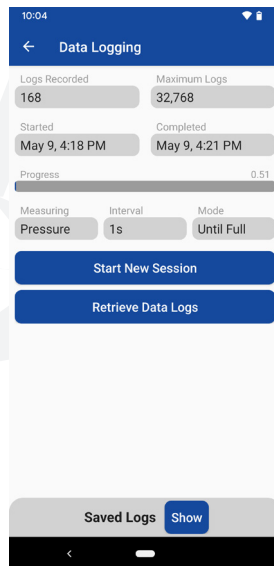
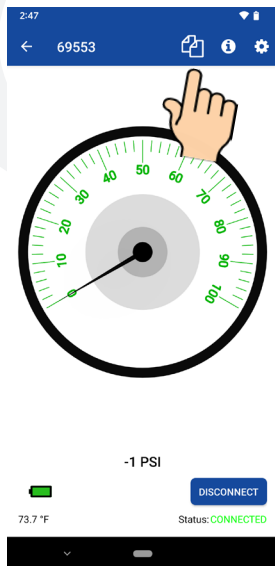
- Double-tap the number reading.
- Select “Yes” to set current reading to zero.
- Select “No” to cancel zero/tare.



**DATA LOGGING**

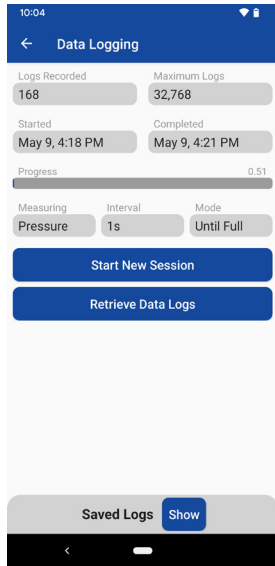


- From the Bluetooth Scan screen, select the Data Logging tab to view only data logging sensors.
- Select the sensor(s) you want to connect to.
- Click the “Connect” button.
- Once connected, select the sensor cell to view large gauge for a single sensor.



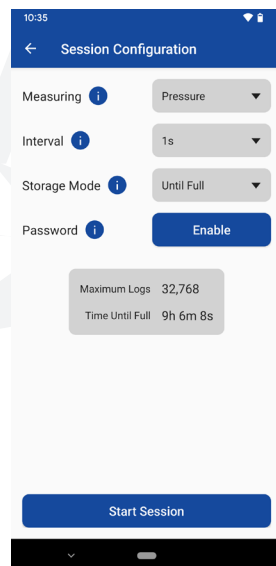
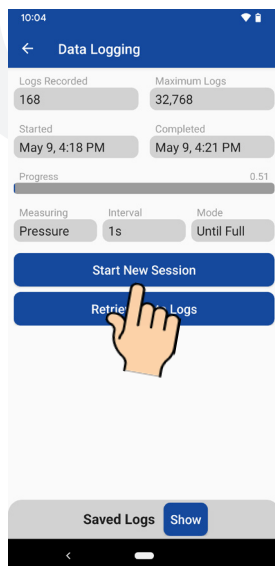
- Select the “Data Logging” icon (upper right) to view the current/previous session information.

## Data Logging Session Information

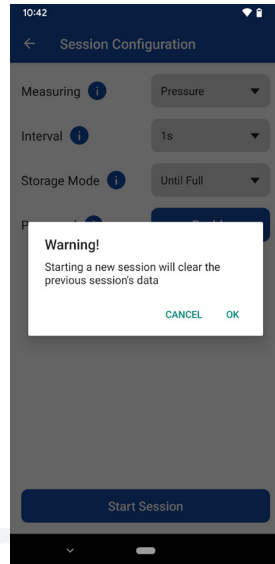
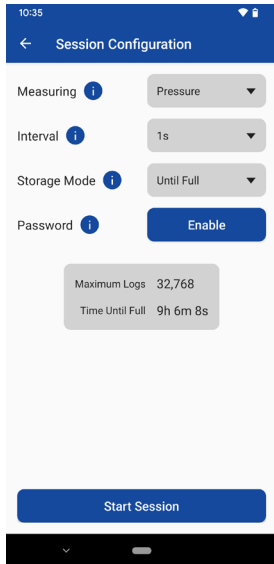


- **Logs Recorded:** Displays the number of logs that were recorded per the maximum amount.
- **Maximum Logs:** Displays maximum number of logs that can be recorded for the given configuration.
- **Started:** Displays the date and time the session started.
- **Completed:** Displays the date and time the session stopped.
- **Progress:** Displays session progress.
- **Measuring:** The specific data that was measured and recorded/logged.
- **Interval:** The rate at which measurements were recorded.
- **Mode:** Displays storage mode used.
- To see Saved Logs, select “Show” at the bottom of the screen.

## Starting a Session



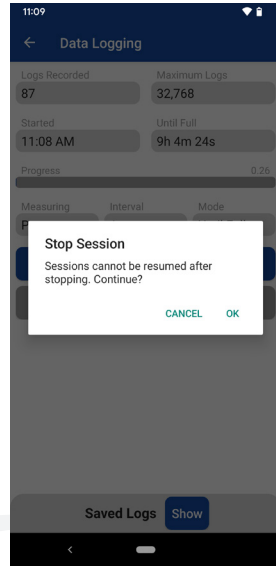
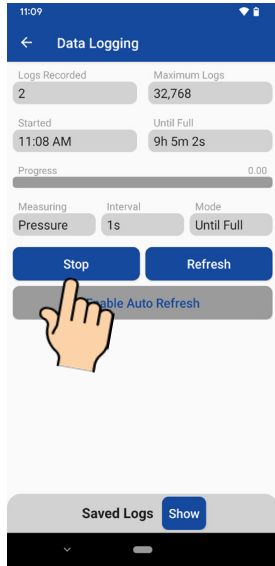
- From the Data Logging Session screen, click the “Start New Session” button.



#### Configure Data Logging Session Setting:

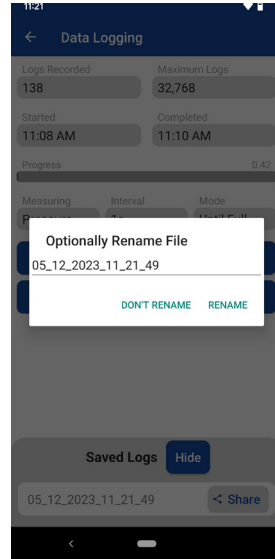
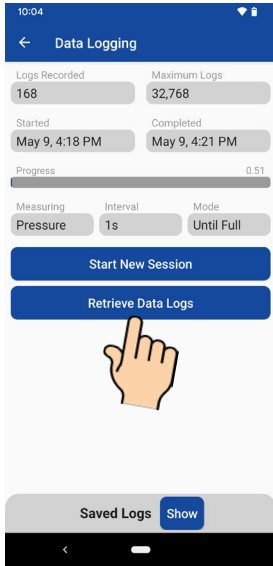
- **Measuring:** Select to view options. For sensors with a temperature probe, you have the option to record Pressure, Temperature or Pressure & Temperature. (If recording both Pressure & Temperature, the max number of logs will be reduced to half. For example, 16384 in FILL mode and 15872 in FIFO mode. The max number of logs count for Pressure only and Temperature only is 32768 in FILL mode and 31744 in FIFO mode. If you do not have a temperature probe, the only option is Pressure.
- **Interval:** Select how often the logger will record a measurement. Interval settings options range from 50 ms up to 1 day intervals (Fill until Full mode). 500 ms up to 1 day intervals (FIFO mode).
- **Storage Mode:**
  - Until Full:** Stores recorded measurements until memory is full and then stops automatically.
  - FIFO (First in First Out):** When memory is full, the logger will replace the oldest recording forward and continue until you stop the session.
- **Password:** If enabled, a 4-digit password will be required to start/stop a session. To enable a password, click the “Enable” button to save.
- Click the “Start Session” button to begin the session.
- You will receive a “Warning” prompt letting you know a new session will clear the previous session’s data. Select “Start” to begin the session.

## Stopping a Session

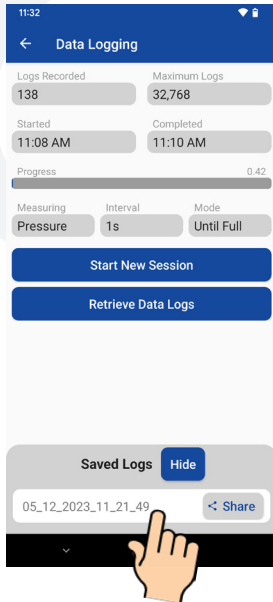


- In the Active Datalog screen, click the “Stop” button.
- A warning message displays indicating that sessions cannot be resumed after stopping. Select “OK.”

## Get Data Log Files

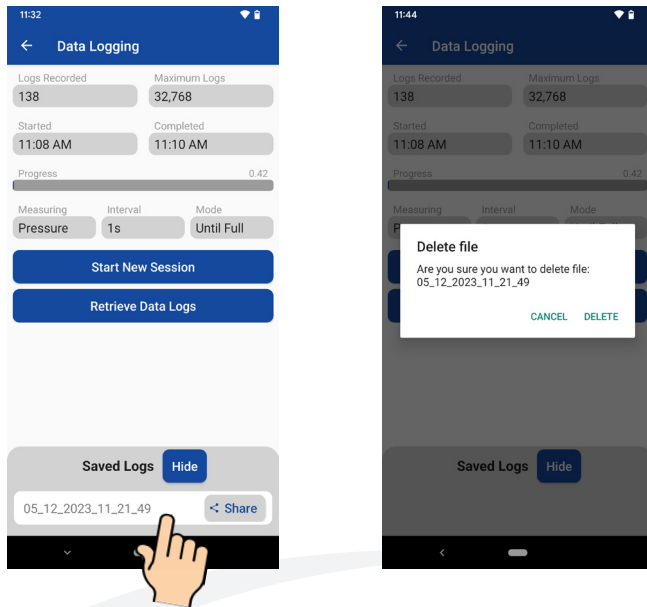


- Click the “Retrieve Data Logs” button.
- The Session File Name appears with date and time stamp when the file was retrieved. You have the option to rename the file.
- To rename, enter a new name and select “Rename”. To proceed without renaming, select “Don’t Rename.”



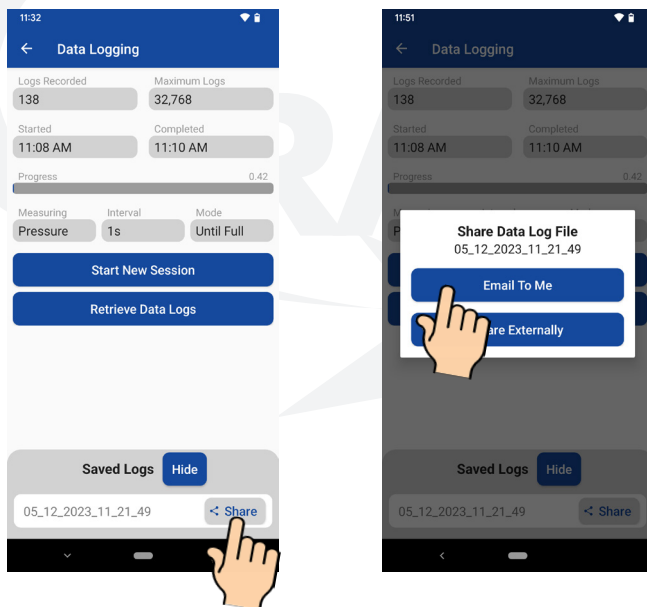
- Under “Saved Logs,” you will see the current log file. You can save a total of 3 logged files.
- To view the file, select the file name.
- To view the logged data in a graph, select the “Graph” tab.

## Deleting a Saved Data Log File



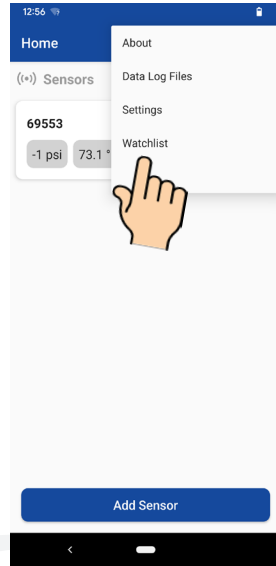
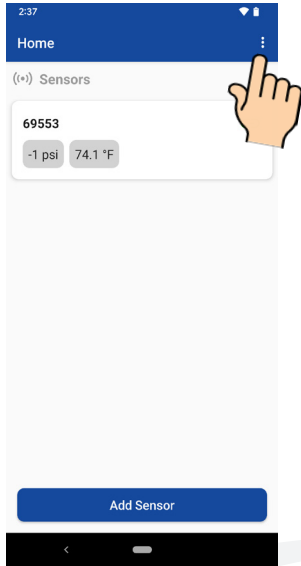
- Select the saved data log file you want to delete and swipe left.
- Select “Delete” to delete the file.

## Emailing the Logged File

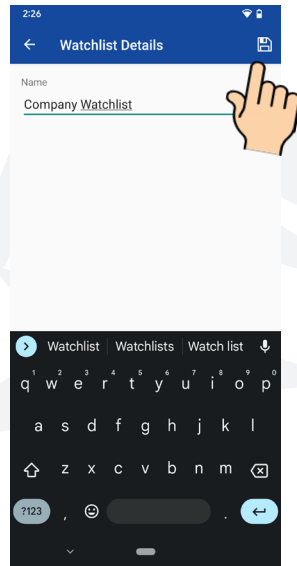
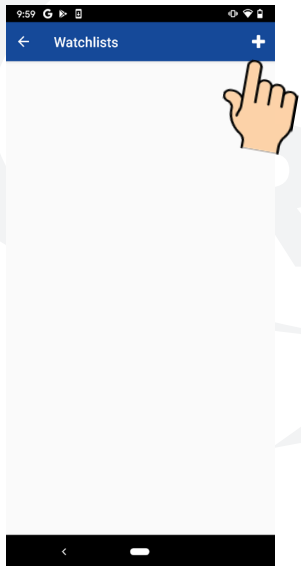


- While on the Current Session Screen, you have the option to share the logged file. Click the “Share” button next to the file you want to share.
- To email the file, click the “Email to Me” button. You also have the option to Share Externally.
- Enter email address and press Send.

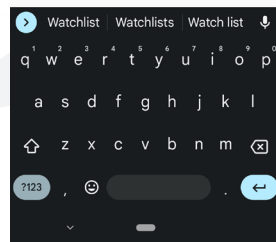
SETTING UP A WATCHLIST

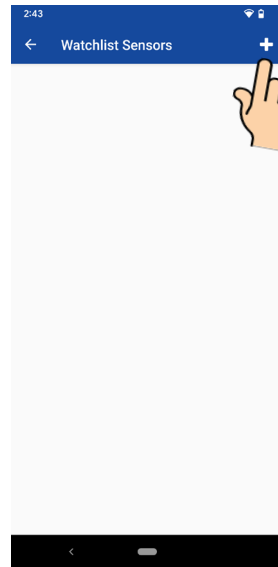
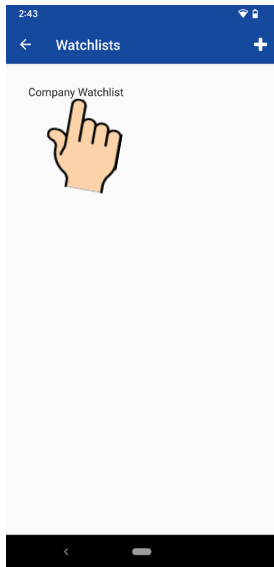


- A Watchlist is used for viewing multiple sensors (up to 6 sensors can be viewed in the normal mode simultaneously). A watchlist is used for viewing more than 6.
- Select the “Vertical Ellipse” icon.
- Select “Watchlist.”

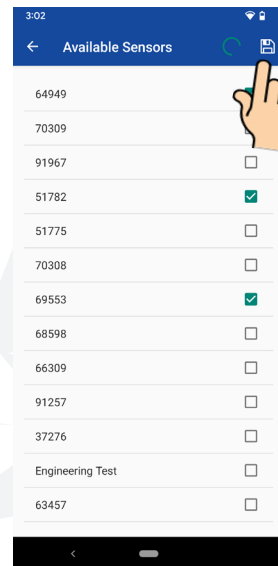
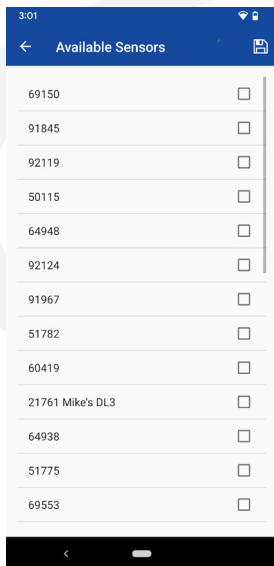


- Select the “+” sign in the upper right-hand corner of the next screen.
- Select the “Name” field and create a name for the Watchlist.
- Select “Save.”



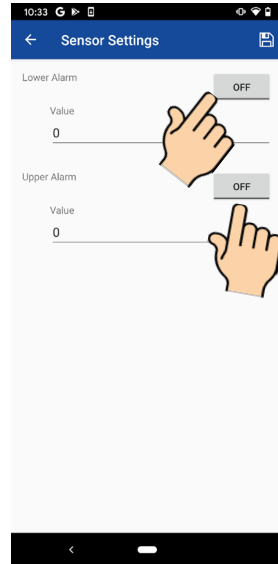
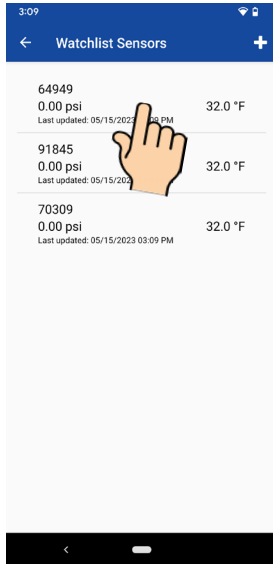


- To add sensors to the watchlist, select the watchlist name.
- Select the “Plus” icon.



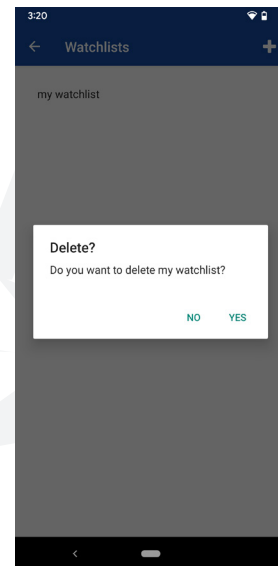
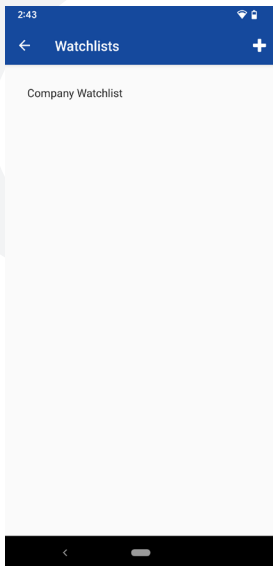
- A list of available sensors display.
- Select each listed sensor (a green check mark will appear next to each selected sensor).
- Select the “Save” icon in upper right-hand corner.





- Each sensor now appears displaying pressure and temperature readings.
- To delete a sensor from the Watchlist, swipe left.
- To view or modify sensor settings, select the sensor.
- **Alarms:** To receive audible and visual alarms in the app, set the upper and lower alarm pressure limits. Select the “OFF” button next to each alarm setting to turn on the alarm.

### Deleting a Watchlist



- To delete a Watchlist, select the Watchlist name and swipe left.
- Select Yes to delete the Watchlist.