

PRELIMINARY

Industry First!
The CirrusSense™
TDWLB-LCC Series
Low Cost/OEM,
Lightweight
Cellular Pressure Transducer



SERIES: TDWLB-LCC

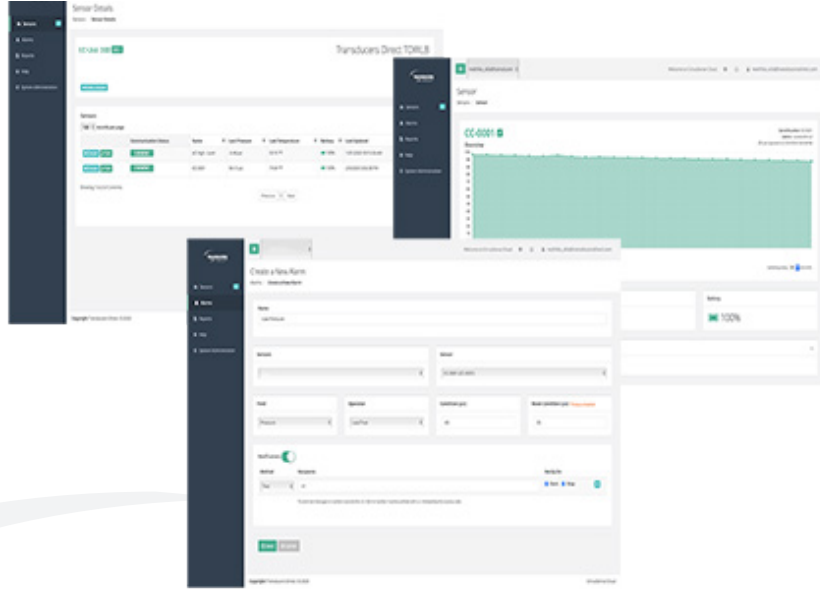
FEATURES

- Integrated cellular communication, an industry first
- Measures both pressure and temperature
- Remote Monitoring Capability Available
- Pressure ranges up to 1,000 psi
- 1% Standard accuracy
- Long battery life (rechargeable)
- Optional DC and Solar Powered Versions Available
- Alarm set points
- Receive email and/or text alerts
- Secure field programmable naming of sensors
- Patent Pending Design

SPECIFICATIONS

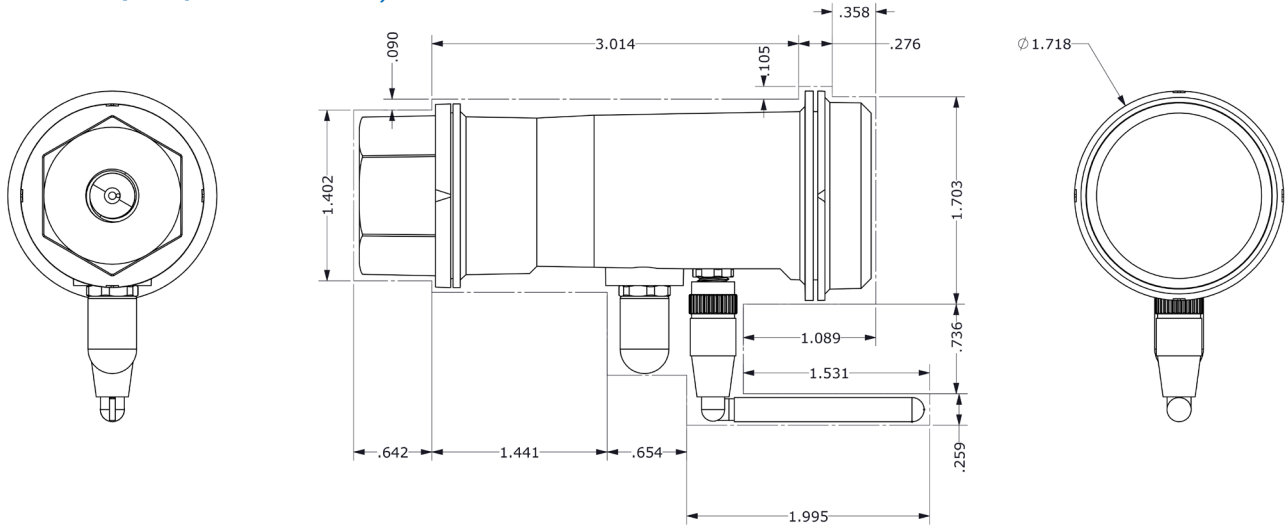
Performance	Performance @ 25°C (77 °F)
Pressure Accuracy	1% BFSL (includes: Non-linearity, Hysteresis and Non-repeatability)
Overrange Protection	1.5x Rated Pressure
Pressure Range	See ordering Code, vacuum to 1,000 psi
Environmental Data	
Temperature	
Compensated Temperatures	-25°C (-13°F) to 60°C (140°F)
Operating Temperatures	-30°C (-22°F) to 60°C (140°F)
Storage Temperatures	-30°C (-22°F) to 60°C (140°F)
TEB	3% of FS
Long Term Drift	0.2% FS/year (non-cumulative)
EMI/RFI Protection	Yes
Rating	IP-67
Mechanical Configuration	
Pressure Connections	7/16-20 UNF Female w/ 45° flare & valve depressor, 1/4 NPT, 1/8 NPT, G 1/4
Wetted Material	Grivory, Viton*, Ceramic
Sealing Material	*Schrader Connection = HNBR, All other pressure fittings Viton
Electrical Data	
Power Supply	Rechargeable battery, battery life: 12+ months, typical. Battery life is affected by high and low temperatures. One rechargeable lithium polymer (LiPo) battery *All units ship with one LiPo battery installed
Power Supply Options	TDWLB-LCC-BAT-CHARGER: Battery charger, single slot TDWLB-LCC-SOLAR-PANEL: Solar panel, M8 connector, 13.8"x4.9" Panel Size TDWLB-LCC-PWR-CABLE: DC Power cable, M8 connector with flying leads, 48" length TDWLB-LCC-CABLE-SPLITTER: Combination DC power/temperature probe splitter cable, M8 connector, 24" length TDWLB-LCC-PSUP-Ext-Cable: AC Plug-in power supply, M5 connector, 48" cable length

TDWLB-LCC DATA PORTAL



DIMENSIONS

Dimensions in mm [inches] and for reference only



ORDERING

Series	Pressure Range	Pressure Connection	Accuracy	Options
TDWLB-LCC	0500 (psi)	42	4	
	0015	01 = 1/8 NPT	4 = 1.0%	Blank= standard battery pack
	0025	03 = 1/4 NPT		BC = Include battery charger
	0050	13 = G 1/4		SP = include solar panel
	0100	42= 7/16-20 UNF Female		PC = include 48" DC power cable
	0250	w/ 45° flare & valve		SP = include 48" DC/Temp splitter cable
	0500	depressor (Schrader)		AC = include 48" AC plug-in power supply
	0650	**		
	1000	**		

**= Consult factory for further OEM options.

Pressure ranges listed above are quick ship versions.

All straight-thread o-rings are Viton. It is customer's responsibility to determine compatibility.